



Cable and Pipe Seals

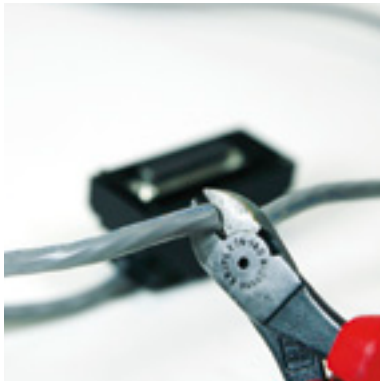
FOR INDUSTRY/OEM

We Seal Your World™



No more cutting off connectors

The Roxtec sealing system allows pre-terminated cables to be routed through the opening of the entry seals. Avoiding cutting and re-attaching connectors results in better connectivity and less risk for EMI and signal loss.



Avoiding failure

Typically, connectors are too large to fit through traditional cord grips and glands. They have to be removed when the cable is routed into the enclosure. Our Roxtec enclosure seals have large internal openings making them ideal for use with pre-terminated cables. This means that the time-consuming and insecure detaching and re-attaching of connectors on site is eliminated. By using pre-terminated cables you are in total control. Full quality

soldering and connections from the factory guarantee the undisturbed function of your system. With pre-terminated cables you can calibrate, adjust and trim the system from the start at factory. This enables you to save a substantial amount of time.

- Allows cables with connectors
- Major time savings
- Long-term operational reliability

Maximize space in a cabinet



- Several cables and pipes per opening
- Enables smaller cabinets
- Allows work-bench assembly
- Adapter plates for cabinets



Make fewer openings for cables and pipes

Roxtec solutions offer very efficient installations. Each entry seal allows several cables or pipes to be routed and sealed through just one opening. This eliminates entirely the need to punch different holes of different sizes for traditional cable glands in a cabinet.

Enables smaller cabinets

Thanks to the area efficiency and the compact design of the Roxtec solutions, it is also possible to reduce the size of a cabinet. Fewer holes for cables, pipes and hoses mean less space is used for entry seals, which allows more space



for equipment. Subsequently, with Roxtec smaller cabinets can be used, which reduces costs.

One standard

The flexibility to handle several cables and pipes of different sizes through one opening makes Roxtec an excellent standard solution for your cabinets and equipment.

Work-bench assembly

A Roxtec entry seal can be pre-packed at the work-bench with cables and connectors ready for quick installation at manufacturing, or in the field. This saves time and simplifies installation work.



Fewer warranty claims

- Less need for redesign
- Standardizes installations
- Engineered for flexibility

Engineered for flexible installations

Our customers use the flexible Roxtec solutions to standardize their installation process. The ability to seal cables, pipes and hoses through one opening reduces lead times in projects and eliminates the need to redesign the routing at a later stage. A project that can leave the factory more quickly means minimum time-to-market.

Reduced costs

An even bigger benefit is radical reductions in warranty claims. By using Roxtec, our clients have been able to achieve safer and more reliable installations of cables with connectors. This reduces their costs for repairs after delivery due to component failure or improper routing.

Roxtec in OEM Industry

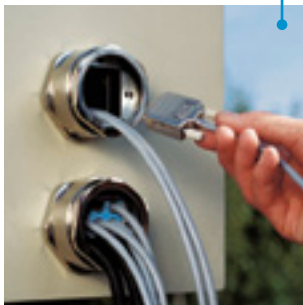
Roxtec transits are found in many places and applications within the OEM industry. Shown here are a few examples of installations where our customers benefit from the flexibility and efficiency of our solutions.



Driver's cabin: The Roxtec S 6x1 is used for mechanical anchorage of cables and reduced vibration.



Cabinet: The Roxtec EzEntry™ allows routing of pre-terminated cables.



Switching cabinet: The Roxtec RG M63 handles several cables in one opening.



Power drive wall: The Roxtec CF 24 can be installed around existing cables.



Control cabinets: The Roxtec S 6x3 transits used in cabinets on a container loading crane.



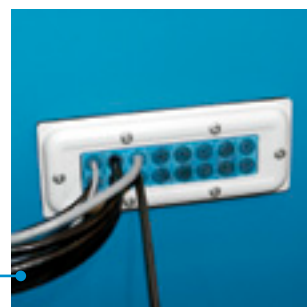
Power supply cabinet: The Roxtec CF 32 can accommodate several cables in a small space.



Cabinet: The Roxtec C RS T on an adapter plate attached to a standard opening for cabinets.

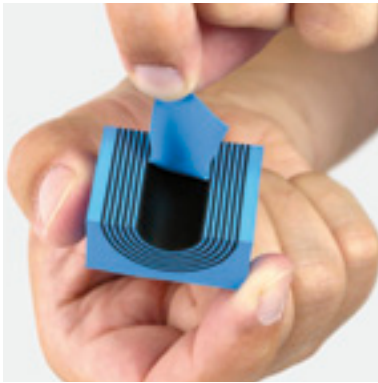


Cabinet floor: Roxtec KFO transits seal cables passing through from a substation.



Robotic routing machine control cabinet: The Roxtec CF 16 maximizes free space thanks to a compact design.

A truly flexible sealing system



Multidiameter™ by Roxtec

The smart adaptability of the Roxtec technology makes installation of cables and pipes easy and safe. The core of each Roxtec seal has removable layers that enable a perfect fit to different sizes of cable or pipe. Just peel a few layers and the seal fits the desired dimension.



Spare capacity

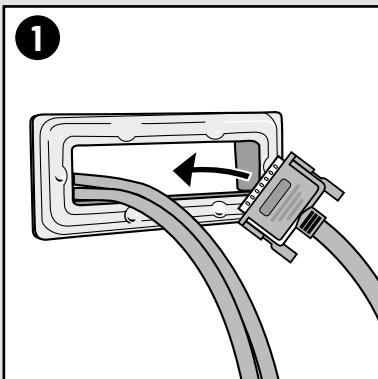
Whenever more cables or pipes need to be installed, our unique sealing technology is ready. Multidiameter™, based on modules with removable layers, allows previously unused seals in a frame to be opened and adapted to fit the new routing. The amount of the spare capacity can be decided from the start, allowing additional cables and pipes later at no further cost.



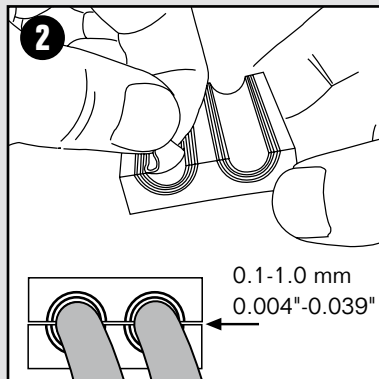
Easy installation

Our products are easy to install. A Roxtec entry seal can easily be opened for maintenance and closed again. Thanks to the modular design and the Roxtec Multidiameter™, cables and pipes can be added and retrofit is made easier.

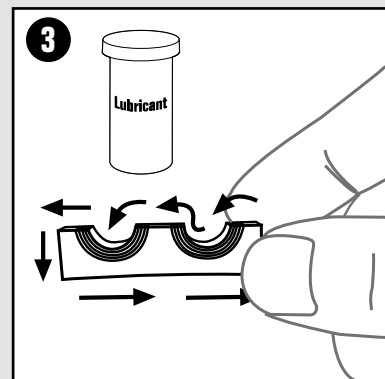
How it works – example of Roxtec CF 16



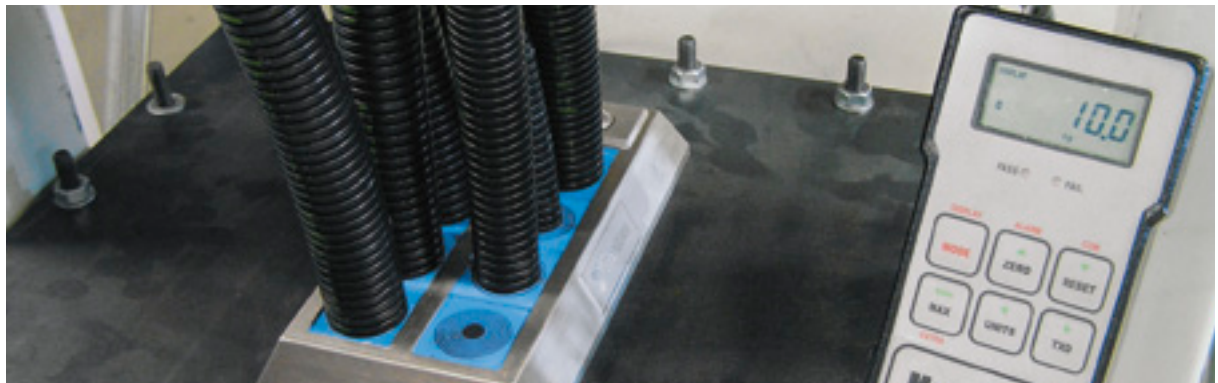
Assemble the frame to the cabinet. Insert the cables through the frame.



Adapt the modules. Achieve a 0.1-1.0 mm gap between the module halves when testing with the cable.



Lubricate all the modules thoroughly with Roxtec Lubricant.

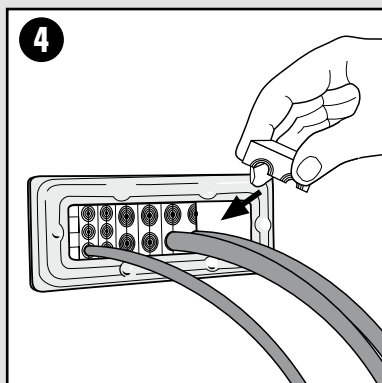


Protection through Rextec

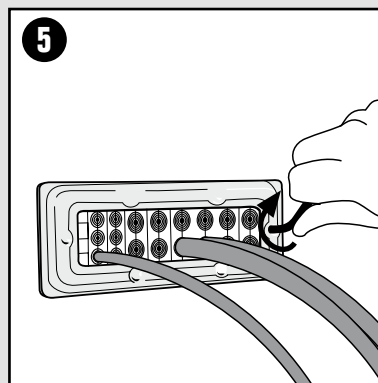
The Rextec cable and pipe entry seals provide protection against a wide range of hazards. Typical examples are water, gas, smoke, dust, fire, vibration and electromagnetic interference. The system is tested and certified by the majority of authorities.

- IP 54, IP 66/67
- Fire protection
- Vibration dampening
- ATEX/IECEX
- UL/NEMA 4, 4X, 12 and 13
- EMC
- Pull-out resistance

For details about specific product rating, please contact Rextec.



Insert the modules around the cables.



Tighten the frame screws to compress the seal.

The frame is mounted onto the enclosure, and cables are routed through the frame. The modules are then inserted around the cables inside the frame. An intrusion-proof seal is created when the seal is tightened and the rubber modules are compressed. An existing seal can be opened and reconfigured in the same way it is assembled.

Examples shows assembly of Rextec CF 16. Other solutions work similarly, but may host different benefits.

Only one part number



- Standardized kits
- One part number
- Multidiameter™

Simple logistics

We supply our customers with smart kit solutions, flexible enough to handle a wide variety of cables, cable configurations, pipes and hoses. The Roxtec kit solutions, with one part number, make planning, purchasing and installation a lot easier.

The need for future expansion is also considered in a kit. Multidiameter™ allows capacity

for future installations and reduces future maintenance costs.

A kit installation can always be finished on site since the modules themselves compensate for any surprises or last-minute changes. Everyone in the project, from design to maintenance, will benefit and stocks can be kept low.

Local support, globally

Local availability

Roxtec solutions are available worldwide through our network of local suppliers. This means fast deliveries from local stocks in more than 70 markets.

Local support

Roxtec is much more than a supplier. Our sales and support staff

around the world play an active role in helping our customers finding their optimum solution to suit their needs and applications.

Product installation training

Whenever desired we provide product installation training through our sales staff and technicians. Call us for more information.

- Local stocks around the world for fast, on-time deliveries
- Local support with domestic staff and sales engineers
- On site product installation training available locally



Among our OEM customers are:

ABB Generators, Alstom, Areva, Aventis, Barilla, Bombardier, ConocoPhillips, Dow Chemical, Dürr Paint Systems Application, Enercon, Fanuc Robotics, Gamesa Eolica, GlaxoSmithKline, Komatsu Loher GmbH, Max-Planck-Institut, Mining Germany GmbH, Multibrid Technology, M Torres, Nestlé, Pauwels Transformers, PSA Peugeot, R. Stahl Schaltgeräte GmbH, Sidel, ST Microelectronic, Tetra Pak, Vestas Wind Systems A/S.



Local presence worldwide

Roxtec is the world-leading provider of flexible sealing solutions for cable and pipe penetrations. Our adaptability solution, Multidiameter™, is based on modules with removable layers. It seals perfectly, regardless of the dimension of the cable or pipe. We are present all over the world in order to ensure product availability as well as quick support and supply.

Sweden, Roxtec International AB, HQ
Argentina, INGIAR Representaciones SRL
Australia, Roxtec Australia Ltd
Belgium, Roxtec b.v.b.a/s.p.r.l
Brazil, Roxtec Latin América Ltda
Chile, FACOR Ltda
China, Roxtec International Trading (Shanghai) Co. Ltd
Croatia, Roxtec d.o.o.
Czech Republic, Roxtec CZ s.r.o
Denmark, Roxtec ApS
Finland, Roxtec Finland Oy
France, Roxtec France
Germany, Roxtec GmbH
Hungary, Glob-Prot Trade and Service Ltd
India, Roxtec India Pvt Ltd
Italy, Roxtec Italia S.r.l
Japan, Roxtec Japan K.K
Kazakhstan, Company ECOS
Lithuania, SWELBALT
Mexico, Roxtec de México, S.A. de C.V
Nigeria, Structured Resource Business Ltd
The Netherlands, Roxtec BV
Norway, Roxtec AS
Peru, Synixtor S.A.C
Poland, Pionet Sp.zo.o
Portugal, Glacis, LDA
Russia, Roxtec RU
Romania, Roxtec RO s.r.l.
Singapore, Roxtec Singapore PTE Ltd
South Africa, Roxtec Africa (PTY) Ltd
South Korea, Roxtec Korea
Spain, Roxtec Sistemas Pasamuros S.L
Switzerland, Agro AG
UAE, Roxtec Middle East F.Z.E
UK/Ireland, Roxtec Ltd
USA/Canada, Roxtec Inc

For other markets and detailed contact information, please visit www.roxtec.com



Roxtec International AB
 Box 540, 371 23 Karlskrona, SWEDEN
 PHONE +46 455 36 67 00, FAX +46 455 820 12
 EMAIL info@roxtec.com, www.roxtec.com